

# Valley CS

Valley CS is a distinctive and highly efficient absorber that plays with geometric patterns to create abstract shapes. Different elements can be connected in a variety of geometric patterns to generate unpredictable and (a)symmetric designs using a discreet modular installation system. This modular system uses four different wooden cores: an Absorber, Diffuser, Bass Trap, and Speaker options. Each provides distinct functionality while keeping the same design. The acoustic covers can be easily swapped or replaced.

Absorbers remove energy from incoming sound waves, reducing reflections and overall reverberation time. Diffusers scatter energy over a wide area, creating more homogenous sound fields. Bass Traps reduce low frequency room modes, diminishing the effect of standing waves. Speaker cores seamlessly integrate in-wall speakers. Discover our Cinema Series, a flexible range that can be adapted to a wide variety of environments and is tailored into beautiful, timeless, multifunctional designs.

## Features

Valley CS + Absorber Core

Absorption Range: 200 Hz to 8000 Hz

Acoustic Class: B | (aw) = 0,8

Valley CS + Bass Trap Core

Absorption Range: 100 Hz to 125 Hz

Valley CS + Diffuser Core

Scattering Range: 1000 Hz to 8000 Hz

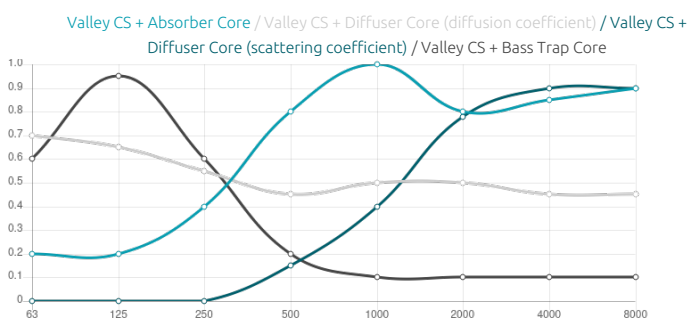
## Purpose

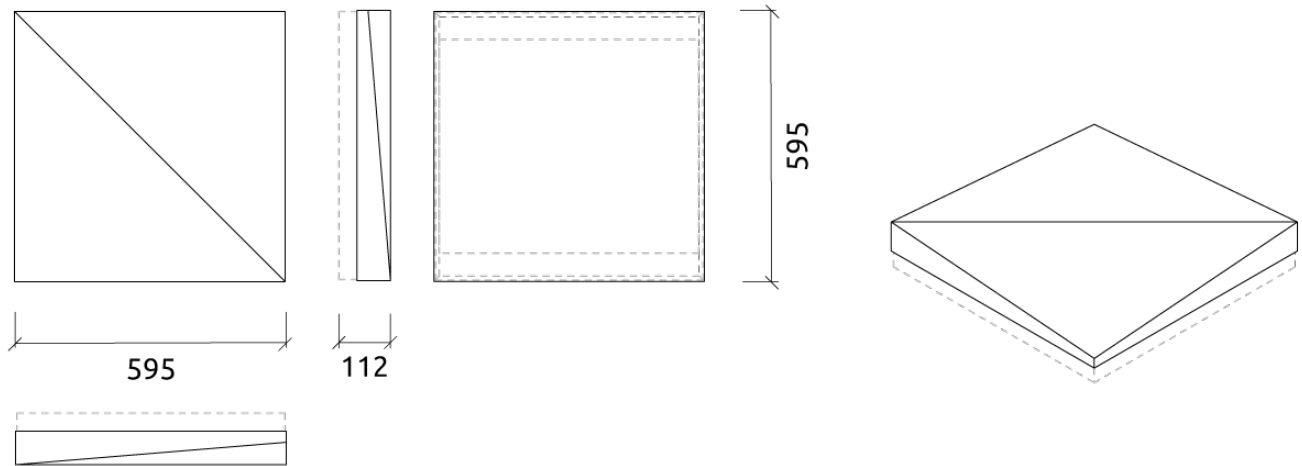
- First reflection Control
- RT reduction
- Extended mid-low frequency absorption
- Flutter echo control
- Reducing excessive reverberation
- Improving speech intelligibility

## Recommended for

- Home Cinemas
- Media Rooms

## Performance





## Add-ons

### Dimensions

FG - SF | 595x595x72mm

FG - WF | 595x595x72mm

### Weight

1.3 Kg

1.3 Kg

### Box

Quantity per box: 4

Dimensions: 645x310x655mm

Volume: 0.131m<sup>3</sup>

Weight: 6.72Kg

## Valley CS

### (FG - SF) Suede Fabric Finishes



**FG | (T0272) Snow White**

Retail code:  
101022550012721



**FG | (T0273) Light Ivory**

Retail code:  
101022550012731



**FG | (T0274) Vanilla Beige**

Retail code:  
101022550012741



**FG | (T0275) Earth Brown**

Retail code:  
101022550012751



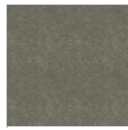
**FG | (T0276) Grey Beige**

Retail code:  
101022550012761



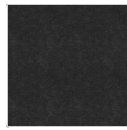
**FG | (T0277) Mink Grey**

Retail code:  
101022550012771



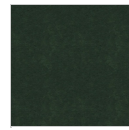
**FG | (T0278) Ash Grey**

Retail code:  
101022550012781



**FG | (T0279) Anthracite Grey**

Retail code:  
101022550012791



**FG | (T0280) Bottle Green**

Retail code:  
101022550012801



**FG | (T0281) Wine Red**

Retail code:  
101022550012811



**FG | (T0282) Violet Blue**

Retail code:  
101022550012821



**FG | (T0283) Ink Black**

Retail code:  
101022550012831

### (FG - WF) Weave Fabric Finishes



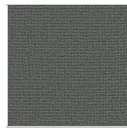
**FG | (TC240) Black**

Retail code:  
102022550012401



**FG | (TC241) Lerwick**

Retail code:  
102022550012411



**FG | (TC242) Merrick**

Retail code:  
102022550012421



**FG | (TC243) Lead**

Retail code:  
102022550012431



**FG | (TC244) Chaucer**

Retail code:  
102022550012441



**FG | (TC245) Glass**

Retail code:  
102022550012451



**FG | (TC246) Easdale**

Retail code:  
102022550012461



**FG | (TC247) Walten**

Retail code:  
102022550012471



**FG | (TC248) Vit**

Retail code:  
102022550012481



**FG | (TC249) Austen**

Retail code:  
102022550012491



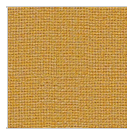
**FG | (TC250) Beltane**

Retail code:  
102022550012501



**FG | (TC251) Shetland**

Retail code:  
102022550012511



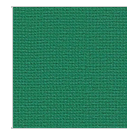
**FG | (TC252) Maree**

Retail code:  
102022550012521



**FG | (TC253) Fair Isle**

Retail code:  
102022550012531



**FG | (TC254) Carron**

Retail code:  
102022550012541



**FG | (TC255) Lossie**

Retail code:

102022550012551



**FG | (TC256) Tummel**

Retail code:

102022550012561



**FG | (TC257) Pitlochry**

Retail code:

102022550012571